

Transport and finding Your Way around GHS!



Written by Natalie
Gilmore.
Yr 7 at GHS

Finding your way around the school can be tricky, especially when you are new to it. Every period you will switch classrooms and will have to find a different room. For the first week of school getting around is pretty easy, since you have teachers to guide you along the way. But what happens after that, when you are left alone to navigate your way around? Here are some tips to help make your life easier at Gosford High School! Make sure you carry your timetable with you, or have a picture of it on your phone. This tip is really helpful, because even in Term 4, you can forget what class you have next. You can always ask a student or a teacher to help you find a classroom. They will always be happy to help and show you the way. If you are too shy to do that, here is a helpful map to help you know where classrooms are.



Written by Haidee
Underwood.
Yr 7 at GHS

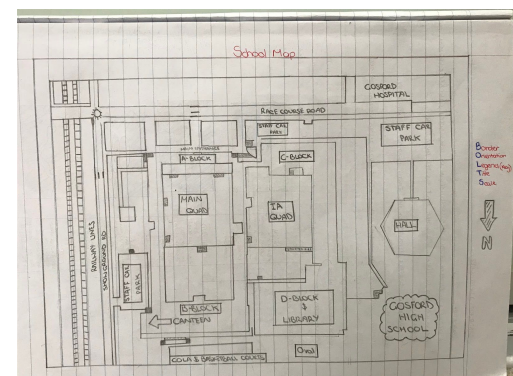
Everyday is a new day of discovery in the transition from primary school to high school. Learning is key but sometimes even the route to learning or school is confusing. On the way to and from Gosford Station there is a jr and sr way so it is never too crowded and so there is room for the general public. In the mornings most people go the sr way and this is fine because the trains from Newcastle and Sydney are about 5 mins apart but in the afternoons, no matter how tempted you are to go the sr way, you can't!

As a Sydney kid, I have to make sure that I am on time because, like most people I know, my and there parents aren't going to drive them 50+ mins to and from school! In the morning transport from Sydney to school is easy. My journey includes a bus to Hornsby and then sometimes the 7:23am train (new version) or if my bus is running late (it usually is) then I'll catch the 7:53am (oldest trains in the train network...). It is important to have backup plans if you miss your bus or it is running late ect, for example I catch a 7:08 bus from my house in Wahroonga so I am

certain I would miss all trains that get me to Gosford on time. On top of stopping at Strathfield, Epping, Hornsby, Woy Woy, Koolewong, Tascot, and Point Claire like the later train, the early Sydney train stops at Berowra, Cowan, Wondabyne, and Hawkesbury River. The 2020 Sydney year 7s (more than half the year) are spread across these two trains. In the afternoon everyone catches the 3.33pm train (old train) from Gosford! On Wednesdays Week B, school ends at 2.45pm and if you walk quite fast (safely) you can make the 3.01pm train

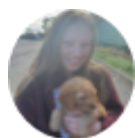
Hornsby Platform 5	Gosford
7:23 am	8:13 am
Real-time data unavailable	CCN

Hornsby Platform 5	Gosford
7:53 am	8:40 am
Real-time data unavailable	CCN



Hand Drawn by Anya Sandeman





Written by Riley
Nightingale.
Yr 7 at GHS

As mentioned in the video, There are 3 options of train to catch in the Newcastle side that will get you to Gosford a reasonable time before the bell. Shown in image

Wyong Platform 2 7:49 am Real-time data unavailable	Gosford 8:07 am CCN
Wyong Platform 1 7:54 am Real-time data unavailable	Gosford 8:15 am CCN
Wyong Platform 2 8:20 am Real-time data unavailable	Gosford 8:38 am CCN

below... (from common station, Wyong).

In the afternoon you can catch the 3:37pm and on Wednesday Week B you can catch the 3:14. The first train stops at Wyee, Warnervale, Wyong, Tuggerah then Gosford, the second train departs from Wyong and stops all stops to Gosford. The last train doesn't stop at wyee or warnervale but only Wyong, Tuggerah then Gosford. If coming from Morisset or before nearly all of these stop there however any questions feel free to ask and I will answer! All 3 trains have many students from Gosford on them so you won't be alone.

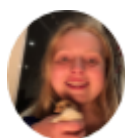


Written by Matilda
Kaeser
Yr 7 at GHS

When going to school you could catch a train or a bus. Catching the bus to school is different from catching the train as there are

different stops. Usually there is a bus stop near you. Here you can check on the post when a bus goes to Gosford Station. These are all public buses. Once you get to Gosford Station you can walk the Jr way to school with the train kids. Or if you want to go directly to school you can catch the school bus. This means you will be dropped of on showcase road or racecourse road. This is how you get to school via bus.

Getting home from school by bus means you either go on showground road which is the side of the school or racecourse road which is the front of the school. If you catch a bus from showground road then it may stop on the side of the road or you have to walk to the station with the train kids to catch a bus from there. If you catch the bus from race course road then what you have to do is cross the road at the front of the school and wait for the school bus. Then when you get to the bus stop you press the stop button and get off. You have to remember to bring your opal card but this is how you catch the bus to and from school.



Written by Bethany
Hibbard
Yr 7 at GHS

The bell times at Gosford are based around public transport. They are as follows: on a normal day the bell rings at 9:00 am , then period one finishes at 10:10, Period

two goes until 11:10 and then you have recess that finishes at 11:30, another two periods then follow. Period three starts at 11:30 and goes until 12:30 and then period four goes until 1:30. Then comes lunch. Lunch goes for 40 minutes so it finishes at 2:10. The last period of the day starts at 2:10 and finishes on the bell at 3:10 and you are allowed to leave. On Wednesdays the periods are changed around. First periods starts as normal on the normal time ,it is the same with the second period; however after recess there is only one period that is period three and then after lunch there is period four and five. On wednesday week B the second period is subbed out for an assembly.