

# WELCOME

# To GOSFORD HS

WE'RE YOUR GOSFORD TRANSITION TEAM AND WE KNOW WHAT ITS LIKE TRANSITIONING FROM Y6 TO HIGH SCHOOL, SO WE'RE HERE TO HELP YOU WITH THAT PROCESS!

~ TODAY WE WILL BE TALKING ABOUT TRANSPORT AND WALKWAYS ~

Hi, I'm ELLY!



HI YEAR 6'S!! Congrats on getting into Gosford High, I'm Elly and I'm part of the transition team who are going to help you get ready for high school!. One of the biggest changes coming to high school is having different classes for different subjects. When I was in Year 6 I was nervous about getting around the school.. Don't worry though!! In the first week you get plenty of support navigating the school as the teachers walk you to each of your classes. After the first week though you're on your own, make sure to pay attention to where you are going in the first week! Three things that really help getting around the school is firstly a map of the school that will help you get to every classroom in the school and is super helpful in the first term getting used to all of the classes! Second is finding some friends in your class and going to your classes together this way if you get lost at least you're together!! Lastly, don't be afraid to ask for help, everyone at our school is friendly so if you are lost and see another older student or teacher ask them for help.

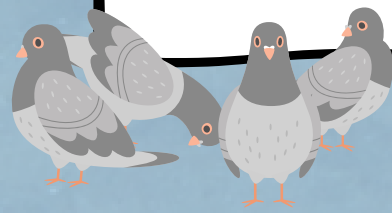
This whole experience is a lot different from primary school and may be worrying or stressful to some people, remember though that everyone else is going through the same thing!

Another massive congrats for getting into GHS!!! I hope to see you guys on orientation or taster day and don't be afraid to approach me. I would love to talk to you guys!! SEE YOU ALL NEXT YEAR :D



"SPECTEMUR AGENDO" LATIN FOR 'JUDGE ME BY WHAT I DO'

TIP : Bunch up with kids in your core class so you don't get lost



Hi, I'm ARISA!

Hi Year 6's! I'm Arisa and I'm part of your transition team to help you settle in as ✨highschoolers✨. First of all, PLEASE DO download or print out a map of the school. Although the teachers will walk you to your classes in the first week, its your responsibility to get to the right class at the right time afterwards. Some students did not have any issues however, in my experience I walked into school the next week without a clue of where I'm supposed to be and got lost almost immediately, so I can definitely say its reliable to have a map on you. Keeping your timetable somewhere near you is also essential in your first days of high school so taking a step further like ordering your books the night before or sticking your timetable on your device is really beneficial for your days here. But if you do ever get lost, you can probably recognise peers in your core class you can bee-line to OR you can just tap someone's shoulder and ask for some help! Everyone's friendly and I can assure you no one bites(I think). You might find me lurking around in IA Quad so if you see me, feel free to bombard me with questions. Otherwise, congrats on making it here and have fun!

# 2024



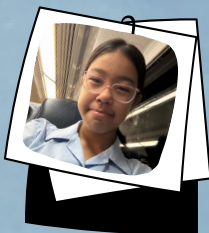
SENTRAL EDUCATION

You can always check your sentral for your timetable!

Remember to stay quiet on the public transport!

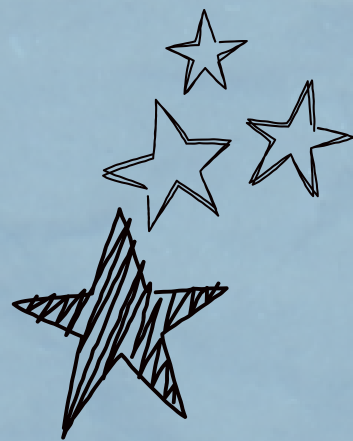






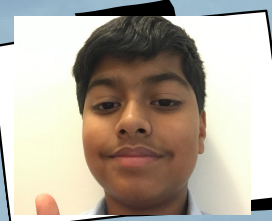
HII, I'M KAYA !

Hi future year 7's and WELCOME TO GOSFORD HIGH SCHOOL 🥳!! I'm Kaya and transitioning from primary school to high school is a big step in life and for most of you, this would seem like a nerve-wracking experience but our job as being part of the transition team is to help you guys feel comfortable and excited to move into high school! As a student that came from a small primary school in North Turramurra , I came to this school without knowing anyone. I'd also never moved schools in my life (excluding pre-school) so making friends soon became a worry... BUT I WAS WRONGGGG!! GOSFORD HIGH SCHOOL HAS AMAZING PEOPLE THAT ARE REALLY KIND, CARING AND MOST IMPORTANTLY, FRIENDLY 😊!!!!!! Whether you are a student that will come to school knowing people or not, I can promise you that making friends will be fine! Also, navigating your way throughout this ENORMOUS SCHOOL may be a challenge (it def was for me) so sticking with a bunch of your classmates or just asking the older kids where each room is is probably ideal 😊 Anyways, congrats to making it into this school and I can't wait to see you all next year!



Blue - Senior Walkway Red - Junior Walkway

MAKE SURE TO USE THE JUNIOR WALKWAY!!



WASSUP, I'M LAKSHAY !

Wassup Year 7s of the future I'm lakshay and I understand changing school can be difficult but I am here to give you some tips to make your transition more smooth and comfortable. Most you are gonna use public transport like trains and buses to reach Gosford High School. There are some rules when you are on public transport. First you have to respect the fact that members of the public are also using public transport so make sure to respect and follow the rules on the train. Make sure to use respectful language as some words can offend or hurt other people and also if you are in a quiet section of the train please be quiet as these area is used to rest or work in peace. Make sire to follow these rules or you may be reported and suffer serious consequences. Thats all from me and I hope all of you be successful and make great friends during your high school journey, I can't wait to see all of you next year! Bye Peeps!



Congratulations!





Hi, I'm ANGELA!



Hey future year 7's! I'm Angela and i'm part of your transition team. Transitioning from primary to high school is a big step in life, which is why we're here to help. Most students will require public transport to get to and from school, which is why you will probably need an student opal card. These student opal cards allow you to travel to and from school without having to pay for the public transport. Opal Cards are important to keep with you because NSW transport workers will randomly check for your opal cards and see if you tapped on. Even if there's an open gate at the station (which there normally is), it's better to not risk the fine. Anyways, congrats on getting here and good luck next year!



<<< student opal card



Hi, I'm DIA!



Hi, future year 7's, Welcome to Gosford High!! I'm Dia and I'm a part of the transition team, we basically make sure that the transition from Primary to high school is easy and as smooth as it can be. Most students will take public transport to get to and from school. I personally take the bus and in the first couple of terms, it is fun to find a friend because if you take the bus, there 100% will be at least 1 Gosford kid going there. When taking the bus always remember to tap on and off as people from NSW transport come and check if you tapped on or not, and take it from me, it is not fun to get caught not tapping on (from personal experiences). But other than those surprise visits, taking public transport to school is the easiest thing ever so.. GOOD LUCK AND HAVE FUN AT GOSFORD!!!



←-----  
Where most kids catch the bus if they are taking it



Hii, I'm AVA!



I am so excited for you guys to come next year! Over half of the school catches public transport to get to school. A lot of us catch the train to and from Sydney or the Coast. I get on and off at Warnervale station on what we call the early train at 7:44 and get back at around 4 pm. Whenever catching public transport, always remember to be respectful and kind to the people that actually had to pay to get on. Always remember to tap on and off! It's useful to go on the train with a friend, but if you enjoy the quiet, that's okay too. If you sit in a quiet carriage, make sure to follow the rules (use headphones, if not turn the audio off and try to talk as little as possible), because we are representing the school in public. That's all from me, but good luck and have fun at Gosford!!! <3

Remember to tap on  
and off on public  
transport!!

Don't run through the  
parking lot when your  
walking out of school!

CONGRATUALATIONS AND GOODLUCK FOR  
NEXT YEAR

-THIS WEEKS TRANSITION TEAM

